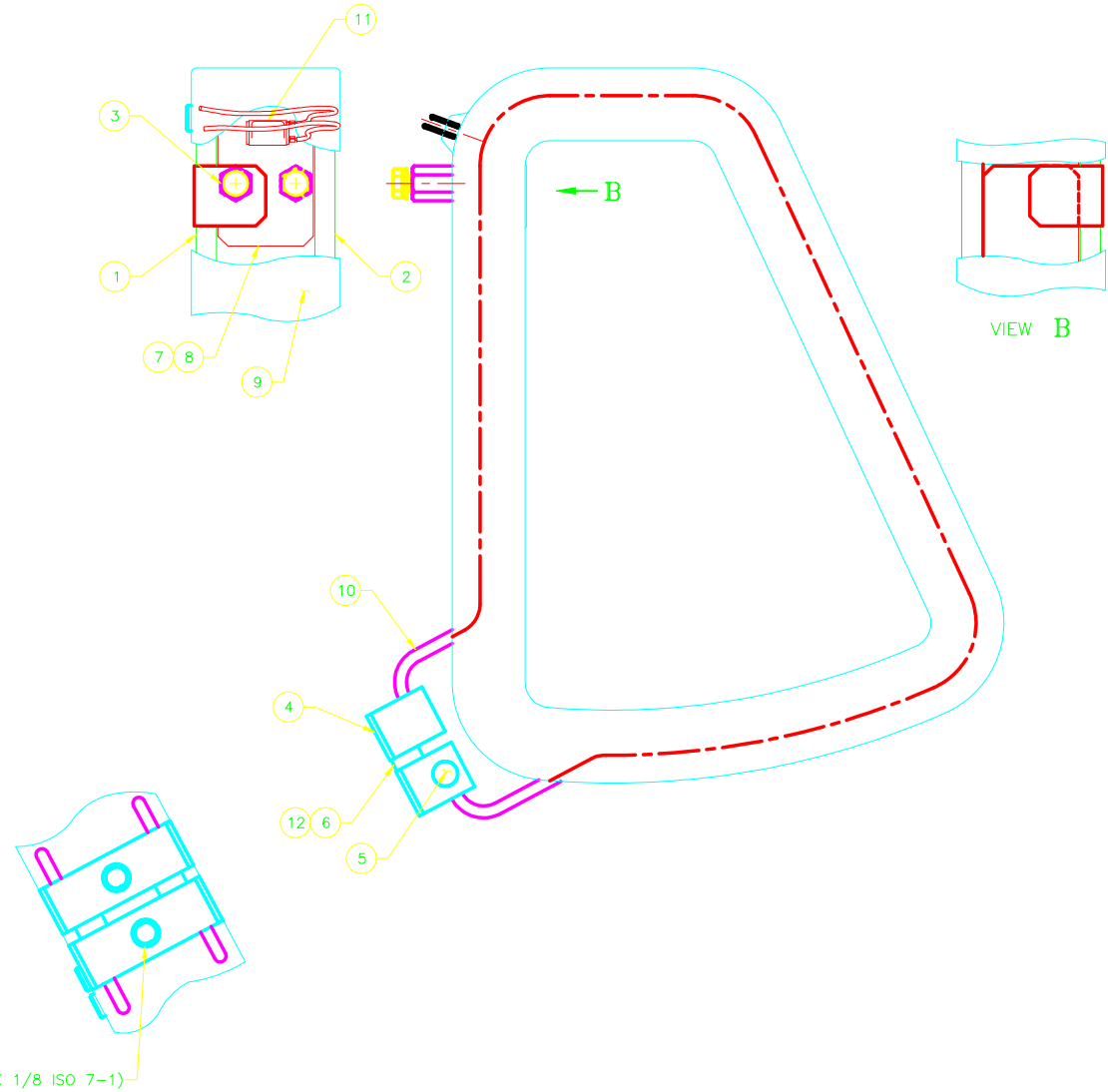


PROPRIETARY
 THIS DRAWING CONTAINS CONFIDENTIAL INFORMATION
 PROPRIETARY TO ISIS. IT MUST NOT BE
 REPRODUCED OR DISCLOSED TO OTHERS OR USED IN ANY
 OTHER WAY, IN WHOLE OR IN PART EXCEPT AS AUTHORIZED
 IN WRITING BY ISIS.

REVISIONS				
REV	DESCRIPTION	DRAFT	DATE	APPROVED
A	INITIAL RELEASE		20MAY2002	BAM
B	CHANGED ITEM 11 SPECIFICATION, ADDED NOTE 7. ADDED LEAD SPECIFICATION.	BAM	09JUN2002	MACKINNON



THIS PART IS THE MIRROR IMAGE OF 11222711 .
 REFER TO DRAWING 11222711 FOR ALL
 DIMENSIONS, TOLERANCES & NOTES.

ITEM	QTY	PART NUMBER	DESCRIPTION	NOTE
12	2		SCREW SHC, M5 X 30 LG, 300 SS	
11	1		THERMAL PROTECTOR SWITCH, KLIXON # 7AM023A5	7
10	A/R		COPPER WATER TUBE, ASTM B-88 Ø4.76 X 0.76 WALL	
9	A/R		FIBER GLASS TAPE, 0.25 THICK, AMINO SILANE TREATED	
8			COPPER, CDA 110 0.380 X 38.1, 5.4 kg	
7	A/R		MYLAR TAPE, 0.076 X 38.90	
6	2	17222741	MANIFOLD SPACER, M5	
5	2	17222751	MANIFOLD PLUG, DIA. 10	
4	2	17222730	MANIFOLD BODY, 38.1, 1	
3	2	17210415	TERMINAL, M6	
2	1	11222662	COOLING PLATE, PLAIN, UPPER	
1	1	11222672	COOLING PLATE, MOUNTING, UPPER	

DRAWN BAM	DATE 17MAY2002	DO NOT SCALE FROM DRAWING DIMENSIONS & TOLERANCES (UNLESS OTHERWISE SPECIFIED)	ION BEAM SYSTEMS, INC. 2282 BROKAW ROAD TEL: (408) 986-8138 FAX: (408) 986-8320 SANTA CLARA, CA 95050
CHECKED	DATE		
ENGINEERING BAM	DATE 17MAY2002	LINEAR X.XXX mm X.XXX ±0.03 ANG X.XX ±0.1 X.X ±0.3 X ±1 DEG. ±0.5 FINISH F6 F6	TITLE COIL ASSEMBLY, UPPER
11222720	326	THIRD ANGLE PROJECTION	SIZE DRAWING NO. A1 11222712
NEXT ASSY SYSTEM		SOFTWARE: AUTOCAD 2000	SCALE 1:1 WT 7.9 kg SHEET 1 OF 1