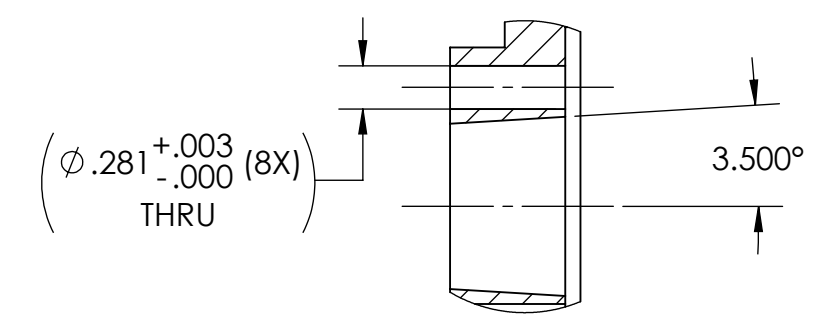
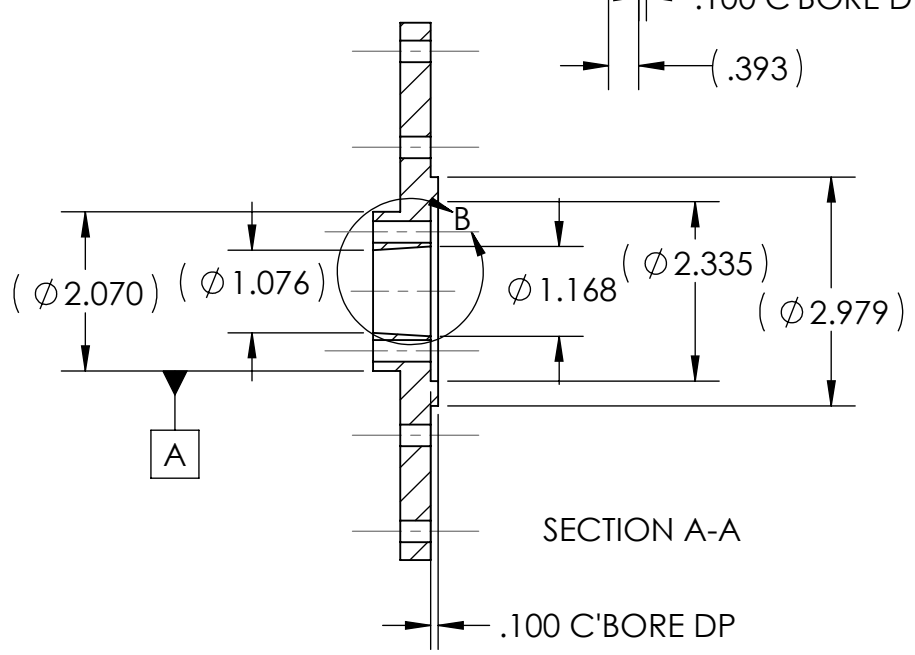
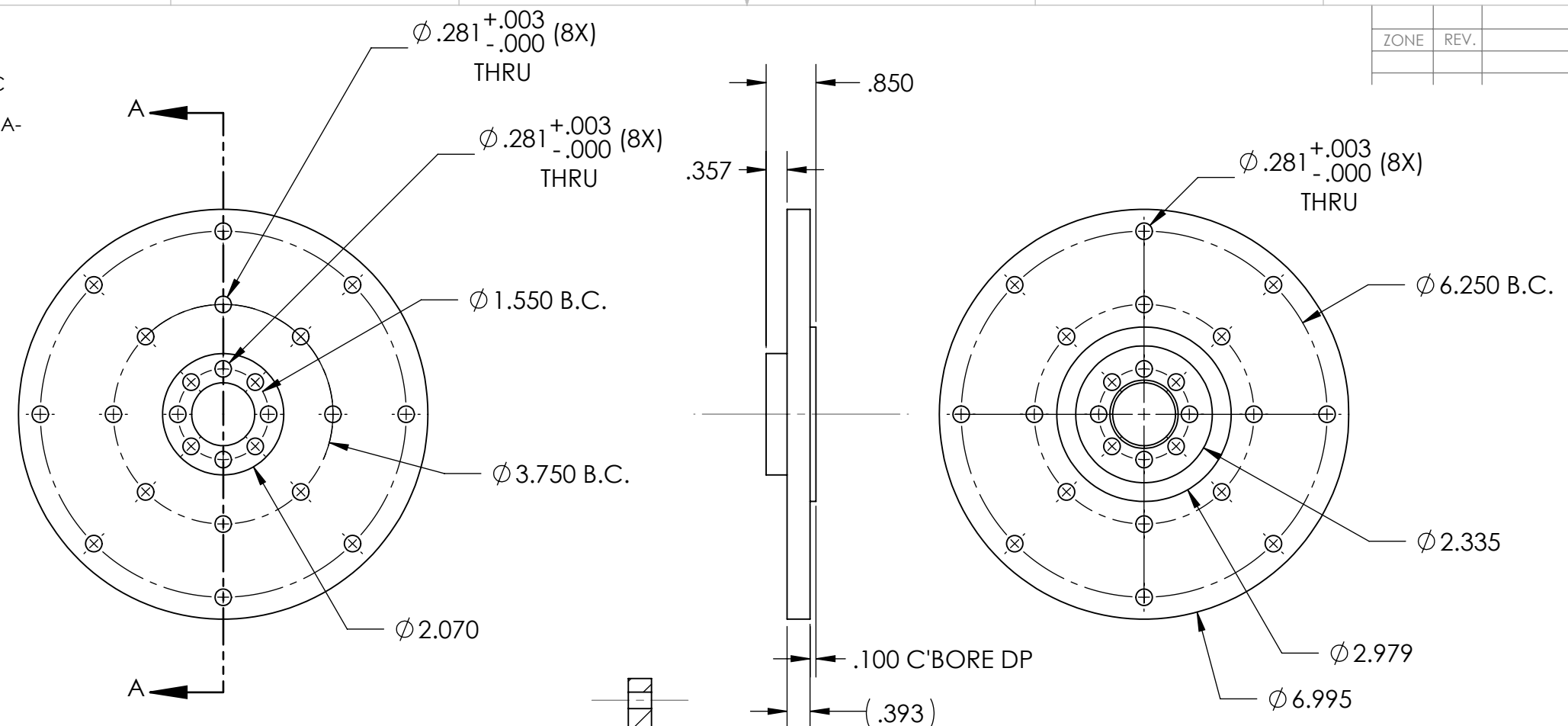


8 7 6 5 4 3 2 1

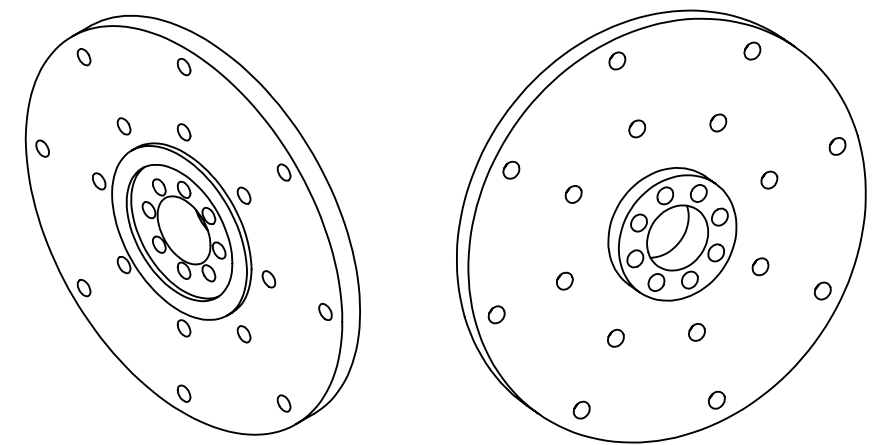
REVISIONS				
ZONE	REV.	DESCRIPTION	DATE	APPROVED

- NOTES:
 1. BREAK ALL EDGES -- NO BURRS.
 2. ALL DIAMETERS TO BE CONCENTRIC TO -A- WITHIN .002" TIR.
 3. HOLES TO BE IN TRUE POSITION TO -A- WITHIN ϕ .010.

IN PROCESS



DETAIL B
SCALE 2 : 2.5



PROPRIETARY AND CONFIDENTIAL
 THE INFORMATION CONTAINED IN THIS DRAWING IS THE SOLE PROPERTY OF EMPIRE MAGNETICS, INC. ANY REPRODUCTION IN PART OR AS A WHOLE WITHOUT THE WRITTEN PERMISSION OF EMPIRE MAGNETICS, INC. IS PROHIBITED.

UNLESS OTHERWISE SPECIFIED:		NAME	DATE	EMPIRE MAGNETICS, INC. ROHNERT PARK, CA 94928	
DIMENSIONS ARE IN INCHES		DRAWN	DTI	8-30-11	TITLE: HUB TAPER LOCK
TOLERANCES:		CHECKED			
FRACTIONAL \pm		ENG APPR.			
ANGULAR: ± 0.5		MFG APPR.			
TWO PLACE DECIMAL ± 0.10		Q.A.			SIZE DWG. NO. REV B HUB TAPER LOCK
THREE PLACE DECIMAL ± 0.005		COMMENTS:			
INTERPRET GEOMETRIC TOLERANCING PER:					SCALE: 1:2.5
MATERIAL		5052-H34 ALUMINUM			SHEET 1 OF 1
FINISH		N/A			
NEXT ASSY	USED ON	DO NOT SCALE DRAWING			
APPLICATION					

8 7 6 5 4 3 2 1