

CLEAN AIR PRODUCTS

General Offices and Plant, 8605 Wyoming Avenue North, Minneapolis, Minnesota 55445
Phone (763) 425-9122 (800) 423-9728 Facsimile (763) 425-2004
info@cleanairproducts.com www.cleanairproducts.com

CAP575 SERIES SOFTWALL CLEAN ROOM

CUSTOMER OLD DOMINION U QUOTE # Q28798 ITEM # 1 PAGE #
MODEL CAP575- 20 W x 40 L x 20 H QTY OF UNITS PN #
ROOM CLASS NONE CUSTOMER PO#

Qty NONE CAP112-424 Motorized Ceiling HEPA Filter:
Aluminum frame with separatorless media,
23.6 x 47.6 with a 3 inch frame,
Junction box with On/Off switch on each HEPA filter module,
3 speed switch - High / Medium / Low,
Pre-filter 20x20x1 with metal support filter frame,
UL Listed.

Std - Filter efficiency 99.99% on 0.3 micron, poly bead test.
Option - Filter efficiency 99.999% on 0.12 micron, poly bead test.

Std NONE Lights 2ft x 4ft - 4 Lamp - "Seal Tight" panel lights with white lamps.
Option - Lights flow thru 2ft x 4ft - 4 lamp with white lamps.
Flow thru lights are shipped installed under the CAP112.

Option NONE Prefab electric wiring kit (relock style) - includes:
- Junction connection box
- Light switch on leg
- UL listed relock cables between junction box, lights and filters

- Total amps at 120 volts, 60 Hz, single phase.

Std YES Clear vinyl curtains, 20 mil, 54 wide, with bottom counterweight, top metal channel mounting, approximate 6" overlap between curtains

Option No Casters - swivel type with foot brake

Option No Ionization bars

Option No Strip door wide (8" strips with 2" overlap .08" material).

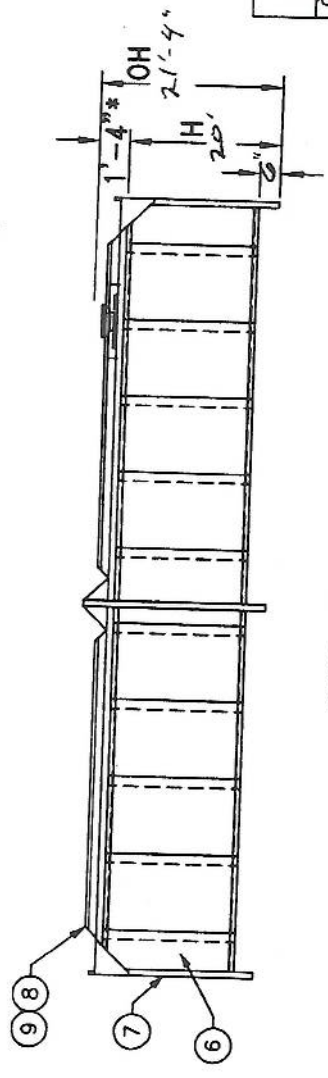
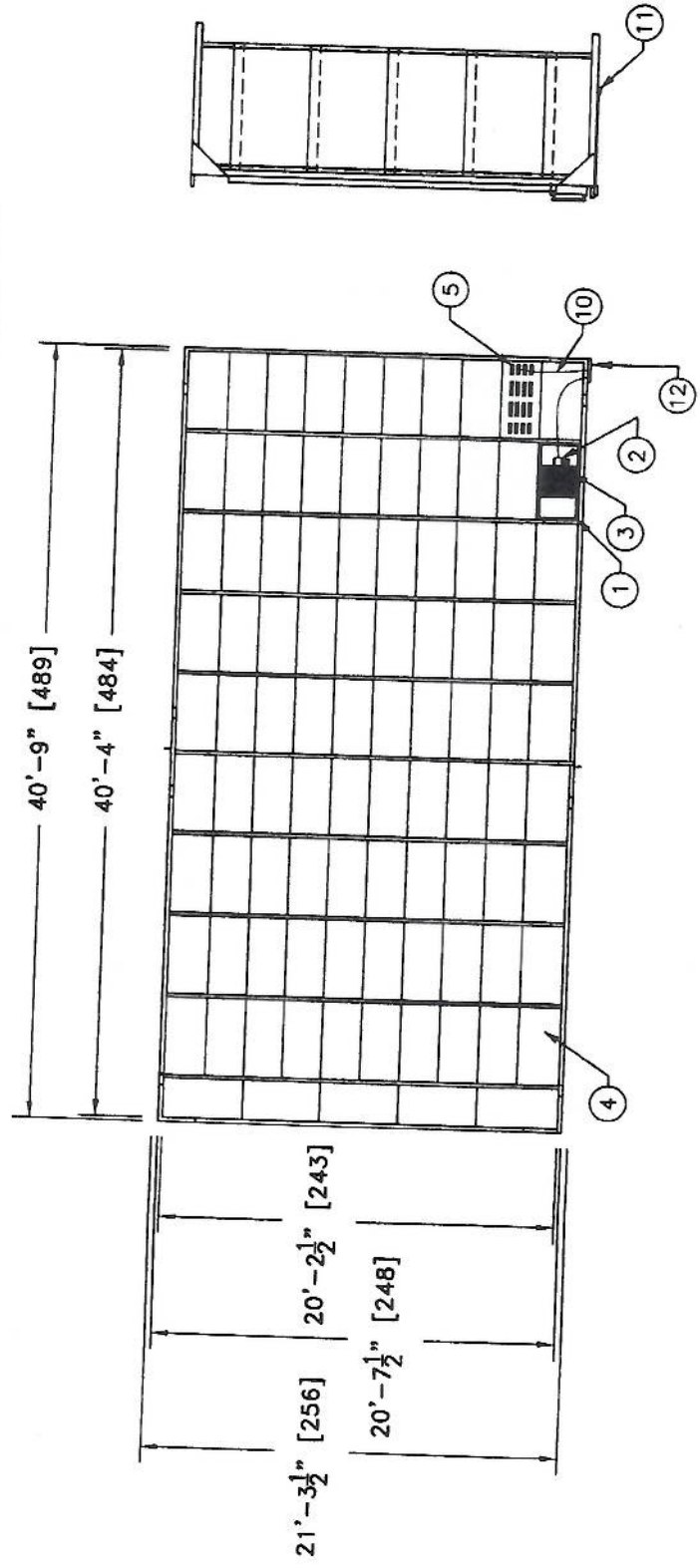
No FILTERS
(87) ACRYLIC CEILING TILES
No LIGHTS

LEGEND FOR BALLOON NUMBERS

1. CAP112-424 Motorized ceiling HEPA filter.
2. Electrical junction box
3. Prefilter
4. Blank panel—white vinyl covered gypsum board with sealed edges
5. Light—fluorescent with lamps
6. Curtains
7. Angle (4 in. x 4 in.) iron support legs with corner support gusset
8. Bolt together (2 in. x 4 in.) tubular steel support frame
9. White baked enamel painted finish

OPTIONAL

10. QUICK FLEX prefabricated wiring
11. Light switch included with prefabricated wiring option.
12. Electrical junction box with prefabricated wiring option



*WITH FLOW THRU LIGHT = 1' 10"

FILTERS & LIGHTS CAN BE PLACED ANYWHERE IN GRID
 CURTAINS & STRIP DOORS CAN BE PLACED ANYWHERE AROUND ROOM

CLEAN AIR PRODUCTS
 MINNEAPOLIS, MN. 55445 (763) 425-9122

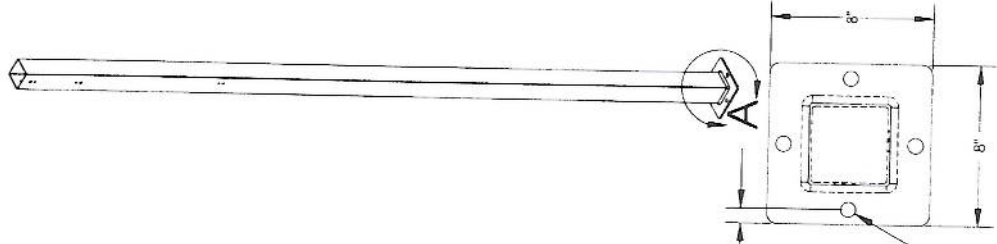
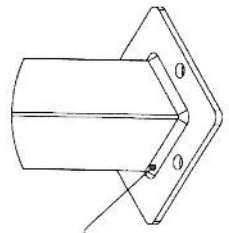
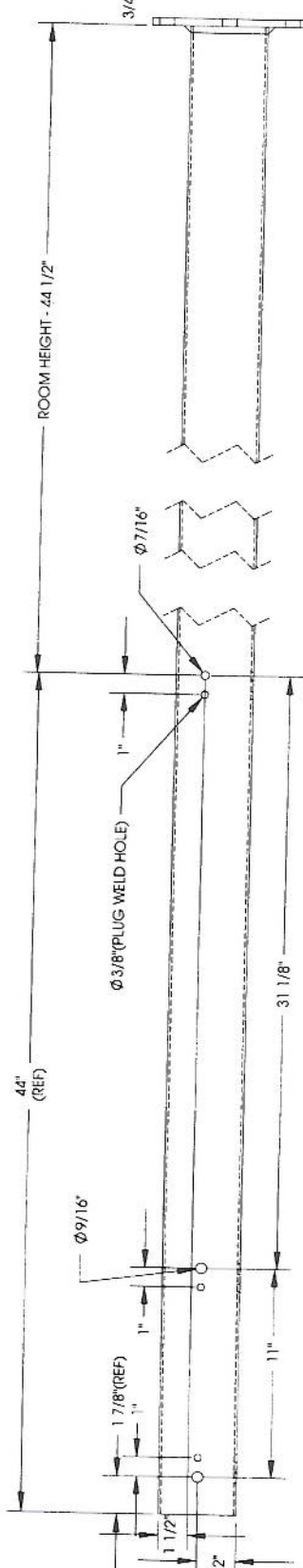
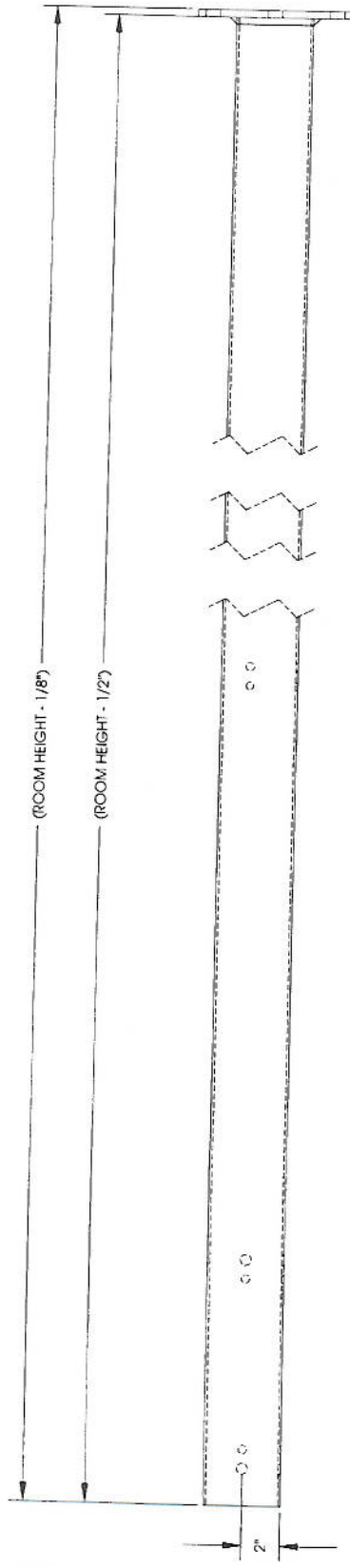
CLEAN ROOM, SOFT WALL
 CAP575-20X40 x 20' H

DATE OF CPG: 9-23-06
 575 (Form/2003)(40)-rev001
 575-20x38(40)-rev001

Q28778

NOTES: UNLESS OTHERWISE SPECIFIED

1. DIMENSIONS ARE IN INCHES.
2. DIMENSIONS ARE SHOWN TO THE OUTSIDE OF BENDS.
3. MATERIAL: 4" X 4" TUBING AND PLATE.
4. FINISH: NONE



PROPRIETARY AND CONFIDENTIAL
 THE INFORMATION CONTAINED IN THIS
 DRAWING IS THE SOLE PROPERTY OF
 CLEAN AIR PRODUCTS. ANY
 REPRODUCTION OR TRANSMISSION OF
 THIS INFORMATION IN ANY MANNER
 WITHOUT THE WRITTEN PERMISSION OF
 CLEAN AIR PRODUCTS IS
 PROHIBITED.

**Clean Air
 PRODUCTS**
 MODULAR CLEANROOM
 CAPS/55 - MEGA BEAM CORNER LEG
 CDG 27 SEP 2006
 575
 136718.1901

8605 WYOMING AVENUE NORTH
 MINNEAPOLIS, MN 55445 (763) 425-9122
 (800) 423-9728

CLEAN AIR PRODUCTS

E-mail: info@cleanairproducts.com
Website: www.cleanairproducts.com

CAP575 SERIES SOFTWALL CLEAN ROOM

CUSTOMER Old Dominion Univ. QUOTE # Q28798 ITEM # 1 PAGE # 1
MODEL CAP575- 20' W x 40' L x 20' H QTY OF UNITS 1 PN # 15478
ROOM CLASS - CUSTOMER PO# RF-064613

ALL DIMENSIONS ARE IN INCHES UNLESS NOTED OTHERWISE

Qty - CAP112-424 Motorized Ceiling HEPA Filter:
Aluminum frame with separatorless media,
23.6 x 47.6 with a 3-inch frame,
Junction box with On/Off switch on each HEPA filter module
Prefilter 20x20x1 with metal support filter frame.

Std - Filter efficiency 99.99% on 0.3 micron Polybead test.
Option - Filter efficiency 99.999% on 0.12 micron Polybead test.

Std - Lights 2ft x 4ft - 4 Lamp - "Seal Tight" panel lights with white lamps.
Option - Lights flow thru 2ft x 4ft - 4 lamp with white lamps.
Flow thru lights are shipped installed under the CAP112.

Option - Prefab electric wiring kit (RELOC® style) - includes:
- Junction connection box
- 2 light switches on leg (one for each filter bank)
- UL listed RELOC® cables between junction box and filters
- Total amps at 120 volts, 60 Hz, single phase

Std YES Clear vinyl curtains, 20 mil, anti-static, 54" wide, U-channel mounting
approximate 6" overlap between curtains, 6" Floor gap.
Option YES 1/4" clear Acrylic ceiling panels - 87 panels



A handwritten signature in black ink is written over a rectangular stamp. The signature is stylized and appears to be 'R. White'. The stamp contains the text 'Clean Air Products' in a vertical orientation.

A41856.0204.02