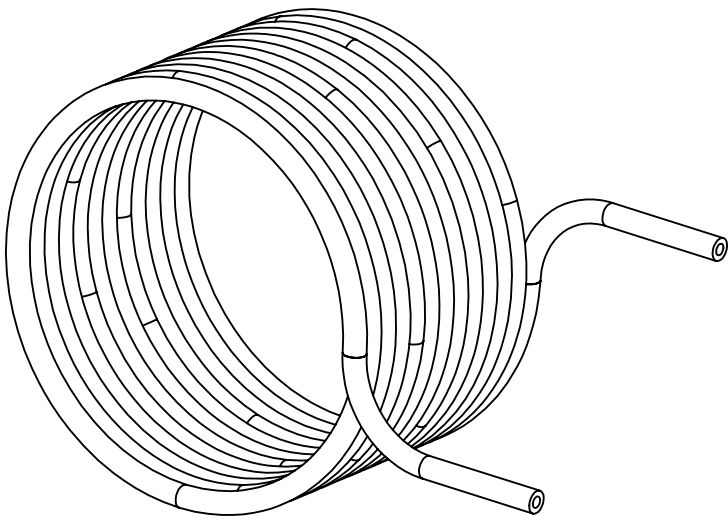
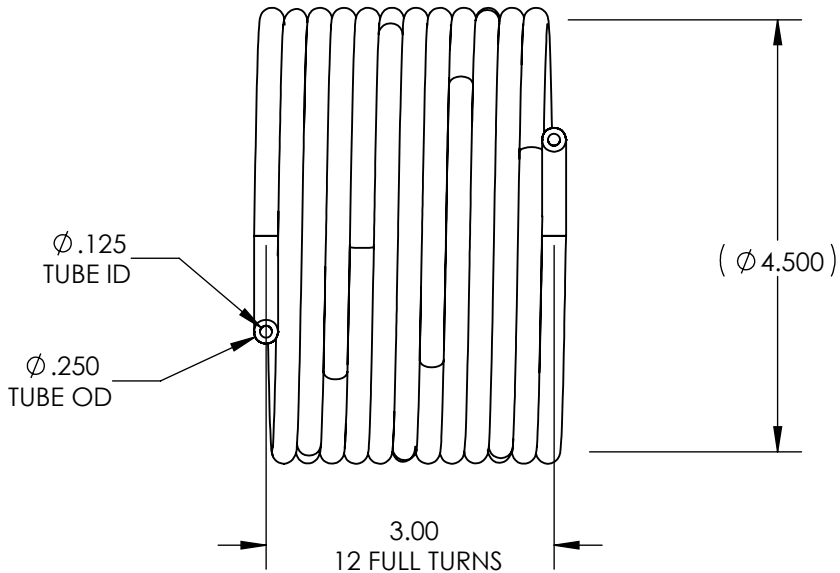
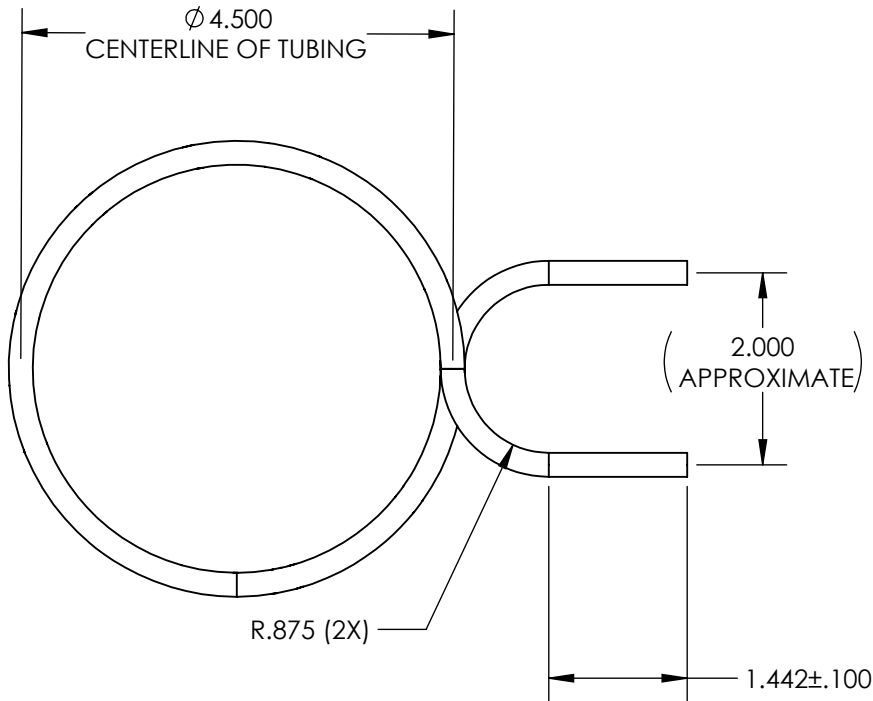
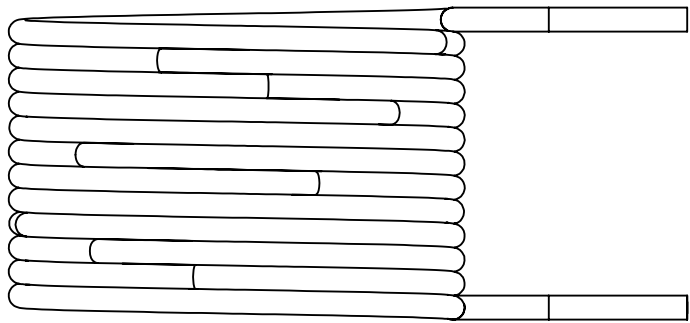


- NOTES:
1. TUBING MATERIAL: COPPER.
 2. ID OF TUBE COIL IS 4.250 DIMETER.
 3. OD OF TUBE COIL IS 4.75 DIAMETER.
 4. BREAK ALL EDGES -- NO BURRS.
 5. PLACE SHAPED COIL TIGHTLY ON ID MANDREL AND TAP OD TO FORM A FLAT ON COIL ID, TO INCREASE THE SURFACE CONTACT WITH MOTOR.



PROPRIETARY AND CONFIDENTIAL
THE INFORMATION CONTAINED IN THIS DRAWING IS THE SOLE PROPERTY OF EMPIRE MAGNETICS, INC. ANY REPRODUCTION IN PART OR AS A WHOLE WITHOUT THE WRITTEN PERMISSION OF EMPIRE MAGNETICS, INC. IS PROHIBITED.

		UNLESS OTHERWISE SPECIFIED: DIMENSIONS ARE IN INCHES TOLERANCES: FRACTIONAL ± ANGULAR: ±0.5 TWO PLACE DECIMAL ±.010 THREE PLACE DECIMAL ±.005	DRAWN	DTI	8-23-11	EMPIRE MAGNETICS, INC. ROHNERT PARK, CA 94928		
			CHECKED			TITLE: COOLING COIL -- HELICAL		
			ENG APPR.					
			MFG APPR.					
			INTERPRET GEOMETRIC TOLERANCING PER:	Q.A.				
		MATERIAL	COMMENTS:			SIZE	DWG. NO.	REV
		FINISH				B	COOLING COOL A HELICAL	
NEXT ASSY	USED ON					SCALE: 1:2		SHEET 1 OF 1
APPLICATION		DO NOT SCALE DRAWING						

REVISIONS		DATE	APPROVED
ZONE	REV.		

PRELIMINARY 1