

CLEAN AIR PRODUCTS

8605 Wyoming Avenue North
Minneapolis, Minnesota 55445
Phone (763) 425-9122 or (800) 423-9728
FAX (763) 425-2004
E-mail: info@cleanairproducts.com
Website: www.cleanairproducts.com

QUOTATION Q30150A

Page 1 of 3

Document Date: June 17, 2010
Revision Date: July 13, 2010

Idaho State University
921 S 8th Ave
Pocatello, ID 83209

ATTN: Jacob Rymer
PHONE (208) 282-0211 **FAX**
E-Mail rymejaco@isu.edu
ATTN: Berkley Starks
PHONE (208) 240-0467 **FAX**
E-Mail bstarks@jlab.org

ITEM	QTY	DESCRIPTION	UNIT COST	EXTENDED COST
1	1	Part # CAP575-30150A-1 Clean Room - Soft Wall CAP575-20x21x15H Class 10,000 - (10) Filter units - CAP112 - (8) Lights - CAP1210 - (32) White vinyl covered gypsum board blank tiles - White painted steel frame, powder coated - 4x4 Tubular steel legs - Steel pads for anchoring to the floor - White painted aluminum T-bar - 40 mil, fire retardant, clear vinyl curtains	\$21,975.00	\$21,975.00
1A	1	Prefab Wire Kit PWK575-10F8L	1,653.00	1,653.00
1B	1	Upgrade to Strip Door - 48Wx174L - 80 mil, fire retardant, clear vinyl - 8-in. strips with a 2-in. overlap	438.00	438.00
1C	1	Upgrade to Strip Door - 120Wx174L - 80 mil, fire retardant, clear vinyl - 8-in. strips with a 2-in. overlap	1,097.00	1,097.00

- Continued on Next Page -

Idaho State University

2	1	Part # CAP575-30150A-2 Clean Room - Soft Wall CAP575-20x21x15H Class 10,000 - (10) Filter units - CAP112 - No lights - (40) Clean room ceiling tiles - clear acrylic - White painted steel frame, powder coated - 4x4 Tubular steel legs - Steel pads for anchoring to the floor - White painted aluminum T-bar - 40 mil, fire retardant, clear vinyl curtains	\$21,535.00	\$21,535.00
2A	1	Prefab Wire Kit PWK575-10F0L	1,085.00	1,085.00
3	1	Part # CAP575-30150A-3 Clean Room - Soft Wall CAP575-20x16x8H Class 10,000 - (8) Filter units - CAP112 - (6) Lights - CAP1210 - (26) White vinyl covered gypsum board blank tiles - White painted steel frame, powder coated - 4x4 Tubular steel legs - Steel pads for anchoring to the floor - White painted aluminum T-bar - 40 mil, fire retardant, clear vinyl curtains	15,997.00	15,997.00
3A	1	Prefab Wire Kit PWK575-8F6L	1,369.00	1,369.00
3B	1	Upgrade to Strip Door - 48Wx90L - 80 mil, fire retardant, clear vinyl - 8-in. strips with a 2-in. overlap	230.00	230.00
3C	1	Upgrade to Strip Door - 120Wx90L - 80 mil, fire retardant, clear vinyl - 8-in. strips with a 2-in. overlap	574.00	574.00

Idaho State University

4	1	Part # CAP575-30150A-4 Clean Room - Soft Wall CAP575-20x16x8H Class 10,000 - (8) Filter units - CAP112 - No lights - (32) Clean room ceiling tiles - clear acrylic - White painted steel frame, powder coated - 4x4 Tubular steel legs - Steel pads for anchoring to the floor - White painted aluminum T-bar - 40 mil, fire retardant, clear vinyl curtains	\$15,735.00	\$15,735.00
4A	1	Prefab Wire Kit PWK575-8F0L	943.00	943.00

This quote is firm for 30 days. Standard Warranty Form 330 applies, located on website.
Sales taxes are not included in the price. Applicable taxes will be added.
Terms Net 30 from date of shipping. Some orders will require a deposit and / or progress payments.
Credit Cards up to \$2500. All orders subject to approved credit. Consult factory for details.
Interest charges of 1.5% per month on accounts past 30 days.
Freight Prepay and Add to invoice, FOB Clean Air Products.


Jeff Pheneger (jeffp@cleanairproducts.com)

REP: Factory Direct

Jason Flaa

ttt

JP

NOTE - Please e-mail purchase orders to: PO@cleanairproducts.com

CLEAN AIR PRODUCTS

General Offices and Plant, 8605 Wyoming Avenue North, Minneapolis, Minnesota 55445
Phone (763) 425-9122 (800) 423-9728 Facsimile (763) 425-2004
info@cleanairproducts.com www.cleanairproducts.com

CAP575 SERIES SOFTWALL CLEAN ROOM

CUSTOMER IDAHO STATE U QUOTE # Q30150R ITEM # 1+2 PAGE # _____

MODEL CAP575- 20 W x 21 L x 15 H QTY OF UNITS _____ PN # _____

ROOM CLASS 10,000 CUSTOMER PO# _____

ITEM
#2

ITEM #1

10

Qty 10 CAP112-424 Motorized Ceiling HEPA Filter:
Aluminum frame with separatorless media,
23.6 x 47.6 with a 3 inch frame,
Junction box with On/Off switch on each HEPA filter module,
3 speed switch - High / Medium / Low,
Pre-filter 20x20x1 with metal support filter frame,
UL Listed.

HEPA

Std HEPA Filter efficiency 99.99% on 0.3 micron, poly bead test.
Option - Filter efficiency 99.999% on 0.12 micron, poly bead test.

NONE

Std 8 Lights 2ft x 4ft - 4 Lamp - "Seal Tight" panel lights with white lamps.
Option - Lights flow thru 2ft x 4ft - 4 lamp with white lamps.
Flow thru lights are shipped installed under the CAP112.

2A

Option 1A Prefab electric wiring kit (relock style) - includes:
- Junction connection box
- Light switch on leg
- UL listed relock cables between junction box, lights and filters

2B

36 Total amps at 120 volts, 60 Hz, single phase.

Std YES Clear vinyl curtains, 40 mil, 54 wide, top metal channel mounting, approximate 6" overlap between curtains

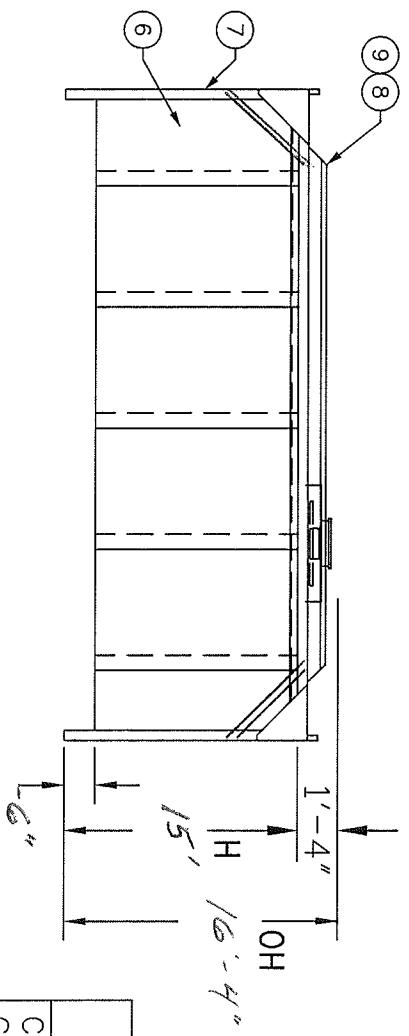
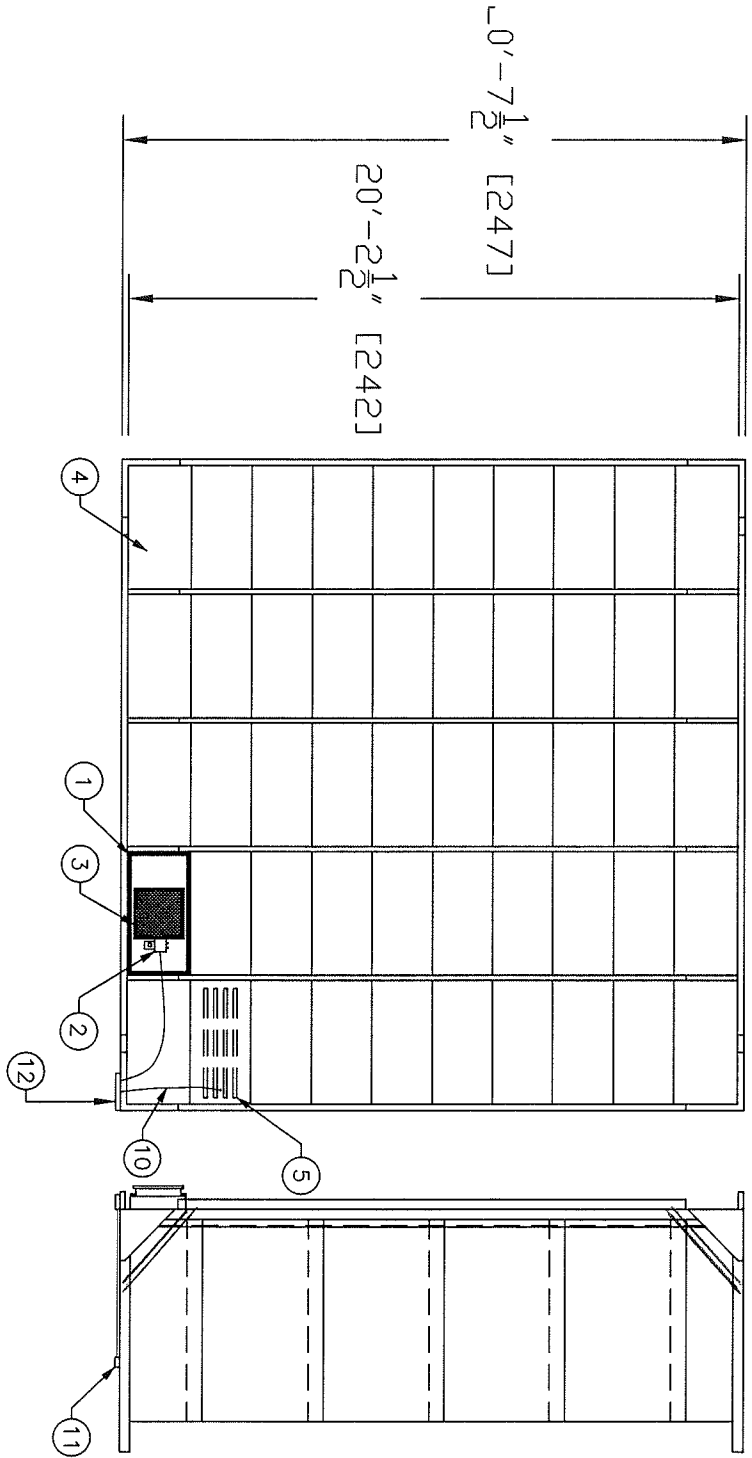
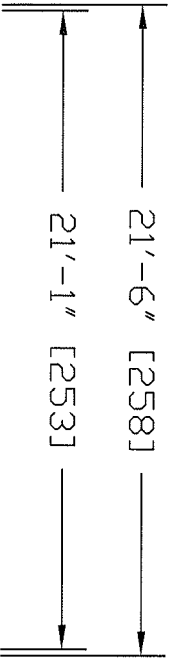
Option NO Casters - swivel type with foot brake

Option NO Ionization bars

Option 1B Strip door 4ft wide (8" strips with 2" overlap .08" material).

1C

10ft



FILTERS & LIGHTS CAN BE PLACED ANYWHERE IN GRID
 CURTAINS & STRIP DOORS CAN BE PLACED ANYWHERE AROUND ROOM

LEGEND FOR BALLOON NUMBERS

1. CAP112-424 Motorized ceiling HEPA filter.
 2. Electrical junction box
 3. Prefilter
 4. Blank panel—white vinyl covered gypsum board with sealed edges
 5. Light— fluorescent with lamps
 6. Curtains
 7. Angle (4 in. x 4 in.) iron support legs with corner support gusset
 8. Bolt together (2 in. x 4 in.) tubular steel support frame
 9. White baked enamel painted finish
- OPTIONAL
10. QUICK FLEX prefabricated wiring
 11. Light switch included with prefabricated wiring option.
 12. Electrical junction box with prefabricated wiring option

<p>CLEAN AIR PRODUCTS MINNEAPOLIS, MN. 55445 (763) 425-9122</p>	
<p>CLEAN ROOM, SOFT WALL</p>	
<p>CAP575-20X21x15H</p>	
<p>DRAWN BY: W. Mc G. DATE: 8-20-96</p>	<p>QUOTE NO. 230150</p>
<p>575\Forms\20X20(21)-rev001A</p>	<p>PART NO. A</p>
<p>FORM NO. 575-20x20(21)-rev001</p>	

CLEAN AIR PRODUCTS

General Offices and Plant, 8605 Wyoming Avenue North, Minneapolis, Minnesota 55445
Phone (763) 425-9122 (800) 423-9728 Facsimile (763) 425-2004
info@cleanairproducts.com www.cleanairproducts.com

CAP575 SERIES SOFTWALL CLEAN ROOM

CUSTOMER IDAHO STATE U QUOTE # Q30150A ITEM # 3+4 PAGE # _____

MODEL CAP575- 20 W x 16 L x 8 H QTY OF UNITS _____ PN # _____

ROOM CLASS 10,000 CUSTOMER PO# _____

ITEM#4
8

ITEM#3

Qty 8 CAP112-424 Motorized Ceiling HEPA Filter:
Aluminum frame with separatorless media,
23.6 x 47.6 with a 3 inch frame,
Junction box with On/Off switch on each HEPA filter module,
3 speed switch – High / Medium / Low,
Pre-filter 20x20x1 with metal support filter frame,
UL Listed.

HEPA

Std HEPA Filter efficiency 99.99% on 0.3 micron, poly bead test.
Option - Filter efficiency 99.999% on 0.12 micron, poly bead test.

NONE

Std 6 Lights 2ft x 4ft - 4 Lamp - "Seal Tight" panel lights with white lamps.
Option _____ Lights flow thru 2ft x 4ft - 4 lamp with white lamps.
Flow thru lights are shipped installed under the CAP112.

4A

Option 3A Prefab electric wiring kit (relock style) - includes:
- Junction connection box
- Light switch on leg
- UL listed relock cables between junction box, lights and filters

22.4

28.4 Total amps at 120 volts, 60 Hz, single phase.

Std YES Clear vinyl curtains, 40 mil, 54 wide, top metal channel mounting, approximate 6" overlap between curtains

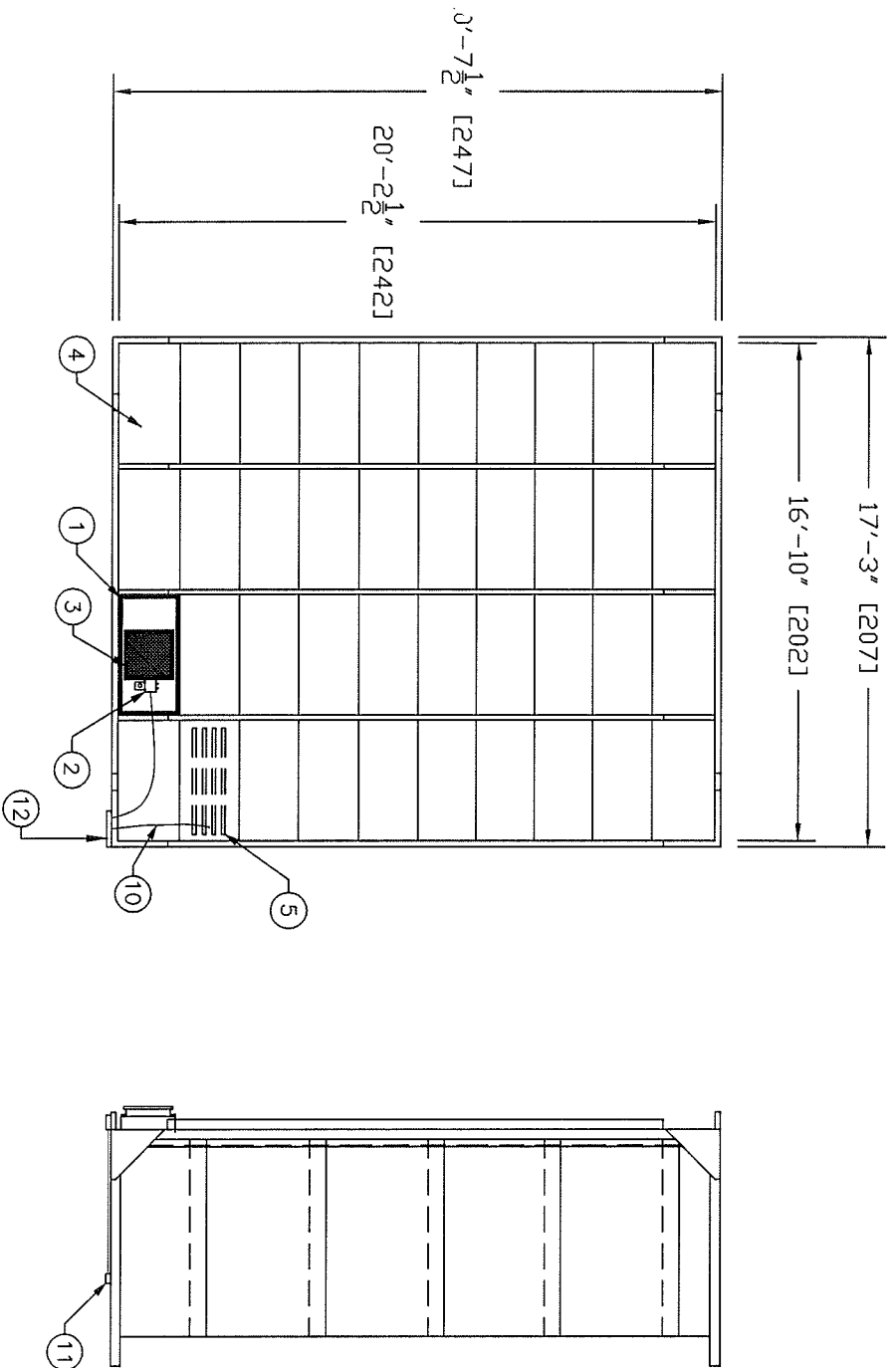
Option NO Casters - swivel type with foot brake

Option NO Ionization bars

Option 3B Strip door 4FT wide (8" strips with 2" overlap .08" material).

3C

10FT



LEGEND FOR BALLOON NUMBERS

1. CAP112-424 Motorized ceiling HEPA filter.
 2. Electrical junction box
 3. Prefilter
 4. Blank panel—white vinyl covered gypsum board with sealed edges
 5. Light—fluorescent with lamps
 6. Curtains
 7. Angle (4 in. x 4 in.) iron support legs with corner support gusset
 8. Bolt together (2 in. x 4 in.) tubular steel support frame
 9. White baked enamel painted finish
- OPTIONAL
10. QUICK FLEX prefabricated wiring
 11. Light switch included with prefabricated wiring option.
 12. Electrical junction box with prefabricated wiring option.

FILTERS & LIGHTS CAN BE PLACED ANYWHERE IN GRID
 CURTAINS & STRIP DOORS CAN BE PLACED ANYWHERE AROUND ROOM

CLEAN AIR PRODUCTS
 MINNEAPOLIS, MN. 55445 (763) 425-9122

CLEAN ROOM, SOFT WALL
 CAP575-20X16 x BH

FORM NO.	575-20X16-rev001	PART NO.	
DATE	8-20-96	QUOTE NO.	Q 30150
QUOTE NO.	500 575\20X16-rev001 A	PART NO.	A