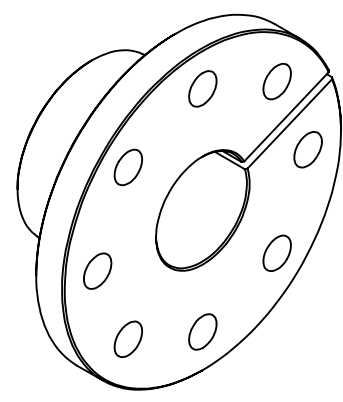
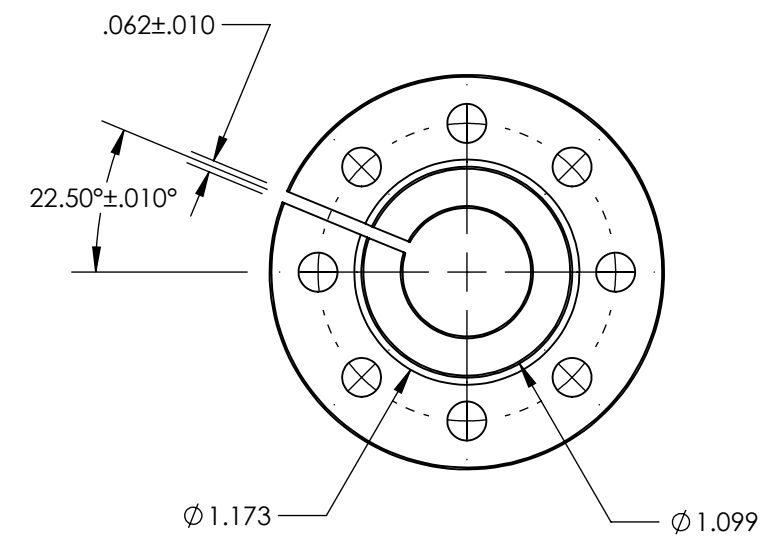
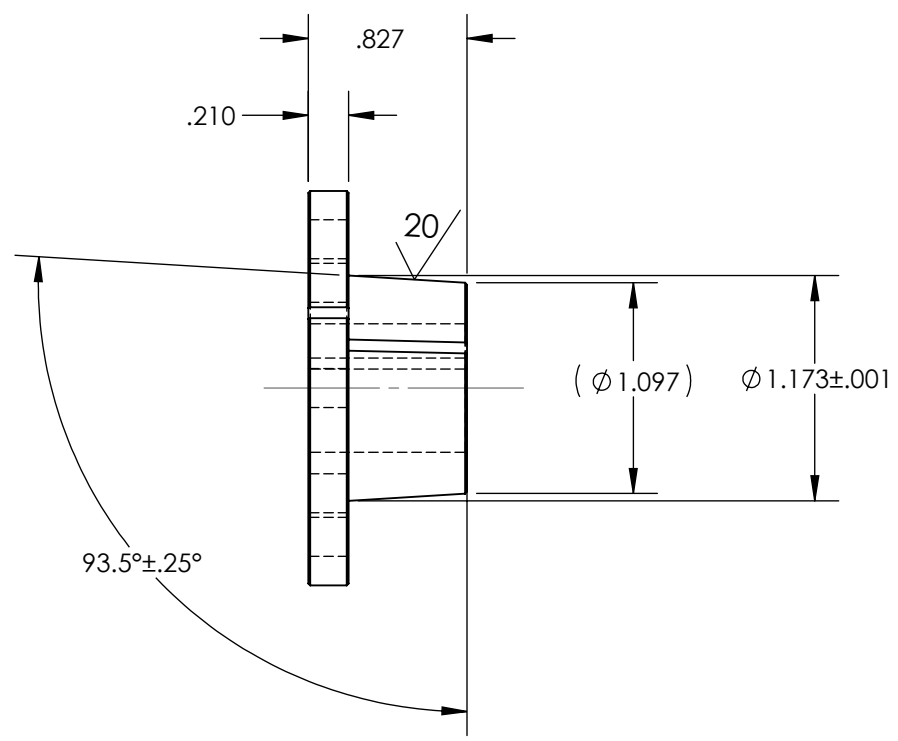
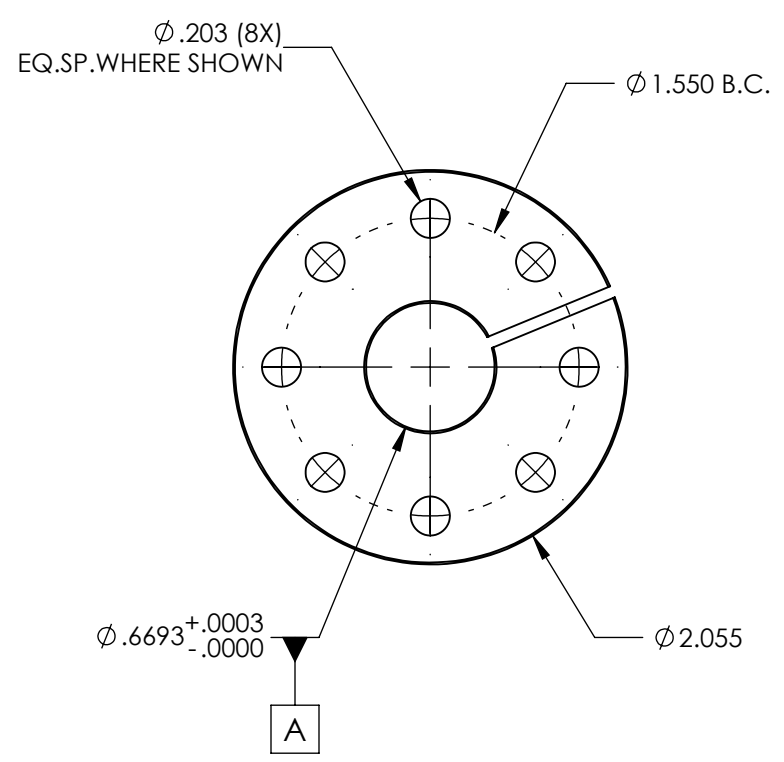


8 7 6 5 4 3 2 1

ZONE		REV.	DESCRIPTION	DATE	APPROVED

- NOTES:
 1. BREAK ALL EDGES -- NO BURRS.
 2. SLIT PART AT LAST STEP.

PRELIMINARY 1 -- IN PROCESS



PROPRIETARY AND CONFIDENTIAL
 THE INFORMATION CONTAINED IN THIS DRAWING IS THE SOLE PROPERTY OF EMPIRE MAGNETICS, INC. ANY REPRODUCTION IN PART OR AS A WHOLE WITHOUT THE WRITTEN PERMISSION OF EMPIRE MAGNETICS, INC. IS PROHIBITED.

		UNLESS OTHERWISE SPECIFIED:		NAME	DATE	EMPIRE MAGNETICS, INC. ROHNERT PARK, CA 94928	
		DIMENSIONS ARE IN INCHES		DRAWN	DTI	8-30-11	TITLE: CONE TAPER LOCK
		TOLERANCES:		CHECKED			
		FRACTIONAL ±		ENG APPR.			
		ANGULAR: ±0.5		MFG APPR.			
		TWO PLACE DECIMAL ±.010		Q.A.			SIZE DWG. NO. REV B CONE TAPER LOCK
		THREE PLACE DECIMAL ±.005		COMMENTS:			
		INTERPRET GEOMETRIC TOLERANCING PER:					SCALE: 1:1
		MATERIAL					SHEET 1 OF 1
		5052-H34 ALUMINUM					
		FINISH					
		N/A					
NEXT ASSY	USED ON	APPLICATION					
		DO NOT SCALE DRAWING					

8 7 6 5 4 3 2 1